

UNIT 108 316 CEDAR STREET

NEW WESTMINSTER, BC

TOTAL AREA 668 SQ.FT.

PATIO 316 SQ.FT.

CEILING HEIGHTS 8'-0"

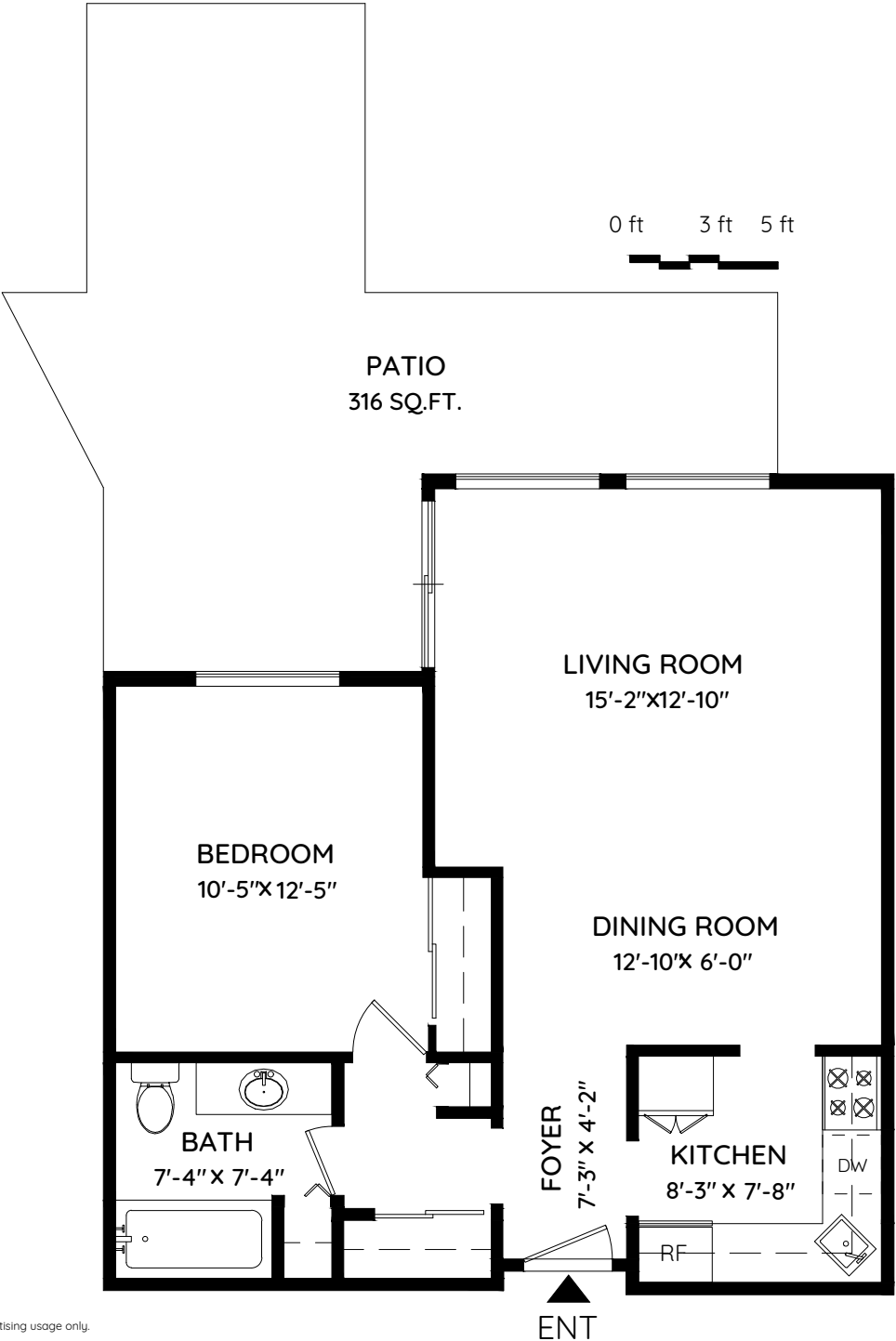


YURIY KAYDA

ASSOCIATE/REALTOR®

604.765.1487

0 ft 3 ft 5 ft



MAIN FLOOR
668 SQ.FT.
CH: 8'-0"



The floor plan and the measurements are approximate and are to be used for advertising usage only. Not suitable for architectural or construction. E&OE. © 2019 KEYPLAN Measuring Inc.

