

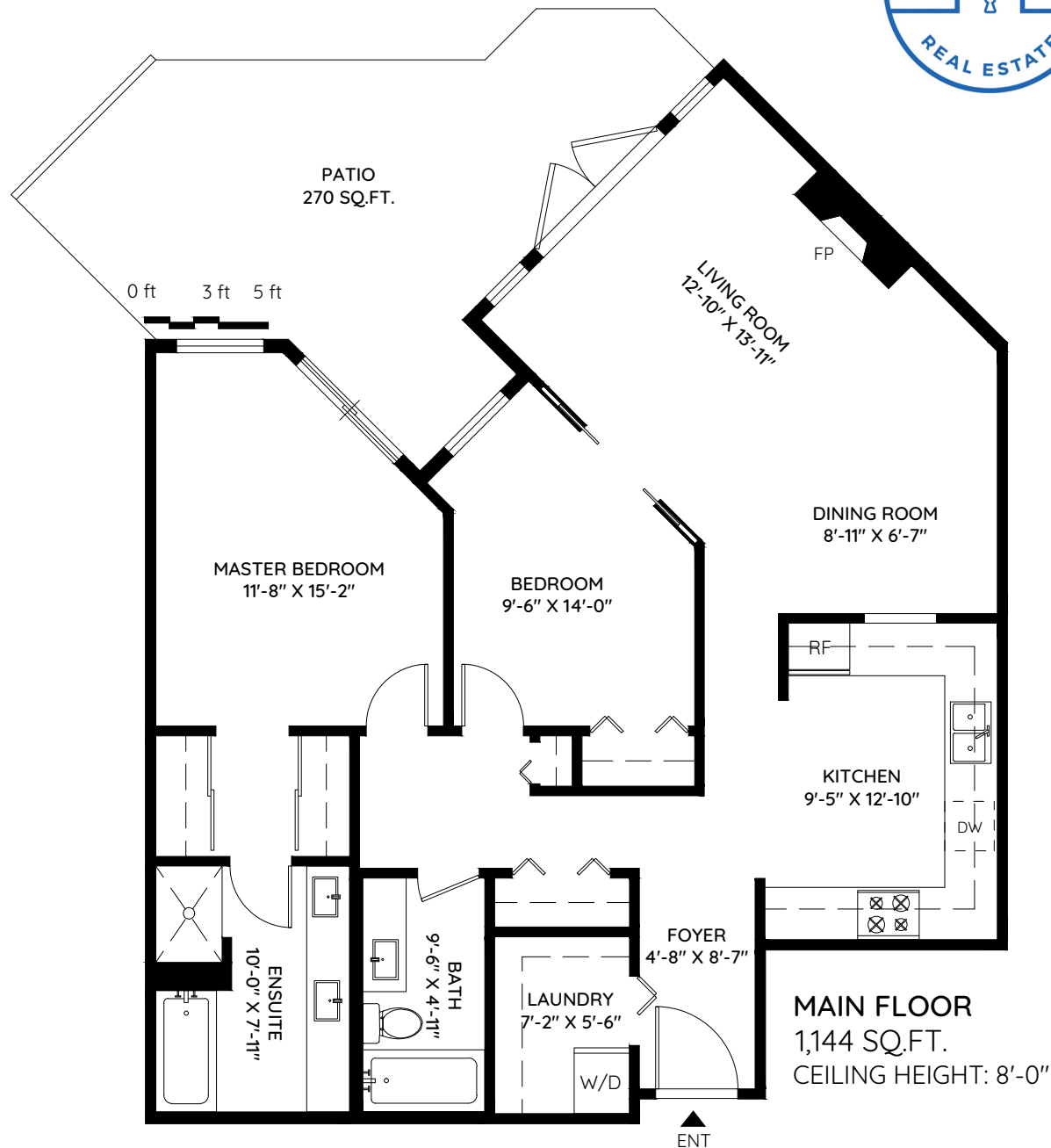
# UNIT 404 25 RICHMOND STREET

NEW WESTMINSTER, BC

MAIN	1,144 SQ.FT.
BALCONY	270 SQ.FT.
CEILING HEIGHT	8'-0"



**PATTI &  
WES GOSS**  
**604-526-2888**  
[WWW.GOSSREALESTATE.CA](http://WWW.GOSSREALESTATE.CA)



The floor plan and the measurements are approximate and are to be used for advertising usage only.  
Not suitable for architectural or construction. E&OE. © 2019 KEYPLAN Measuring Inc.

**keyplan**  
plan your space