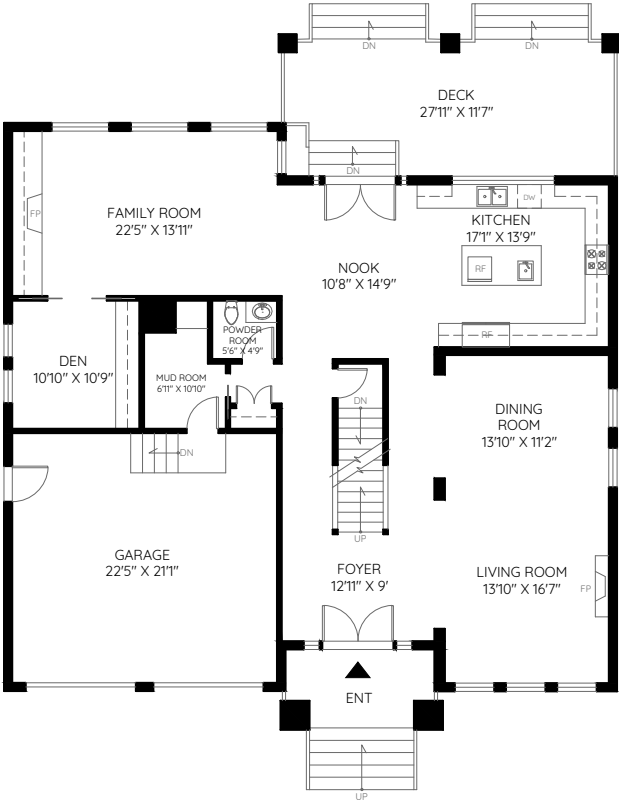


3320 PHILIPS AVENUE
BURNABY, BC

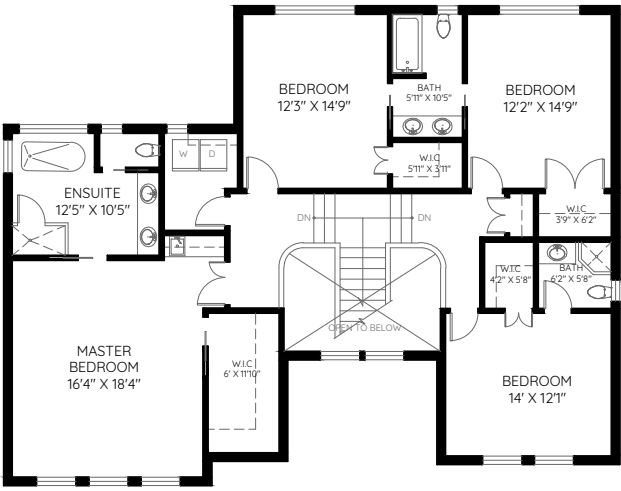
| | |
|--------|--------------|
| MAIN | 1,745 SQ.FT. |
| UPPER | 1,536 SQ.FT. |
| LOWER | 1,680 SQ.FT. |
| <hr/> | |
| TOTAL | 4,961 SQ.FT. |
| GARAGE | 498 SQ.FT. |
| DECK | 322 SQ.FT. |



BASEMENT
1680 SQ.FT.



MAIN
1745 SQ.FT.



UPPER
1536 SQ.FT.

