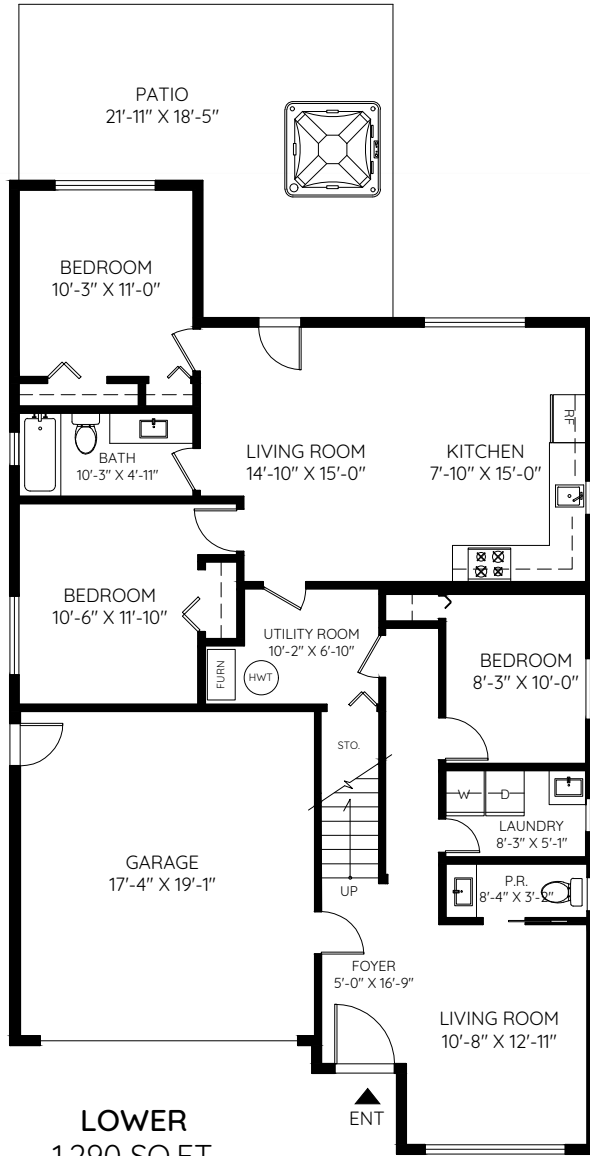
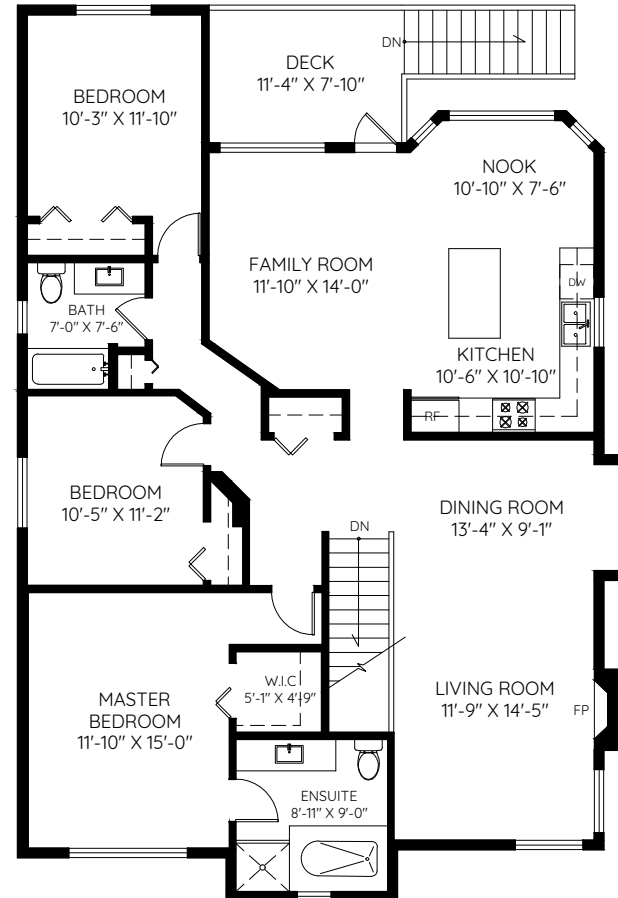


# 23595 112B AVENUE

MAPLE RIDGE, BC



**LOWER**  
1,290 SQ.FT.  
CEILING HEIGHT: 8'-0"



**MAIN**  
1,561 SQ.FT.  
CEILING HEIGHT: 9'-0"

MAIN	1,561 SQ.FT.
LOWER	1,290 SQ.FT.
<b>TOTAL</b>	<b>2,851 SQ.FT.</b>
GARAGE	351 SQ.FT.
PATIO	317 SQ.FT.
BALCONY	95 SQ.FT.
<b>TOTAL</b>	<b>763 SQ.FT.</b>

