

19180 SUNDALE AVENUE

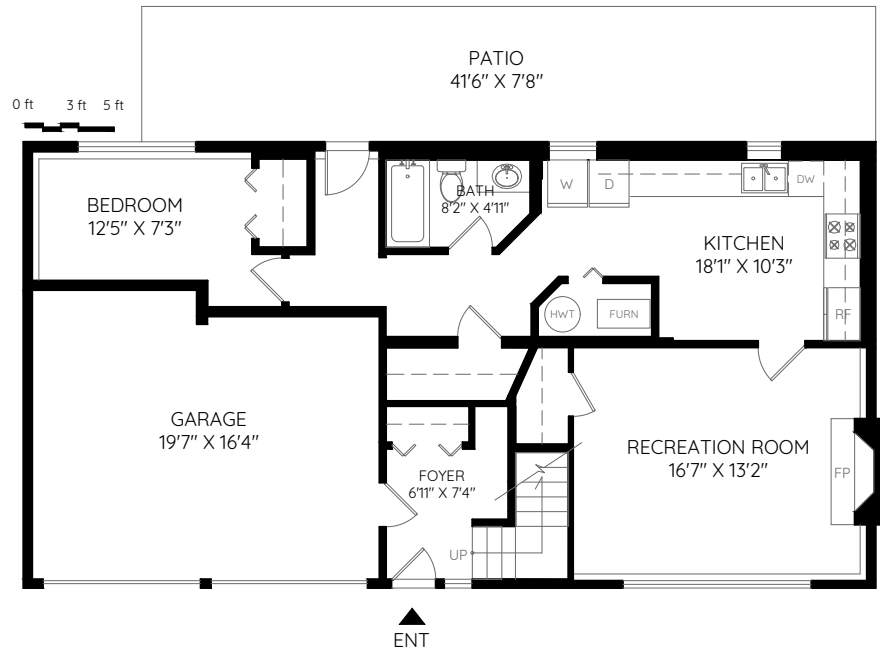
SURREY, BC

THE 604 NEW HOME TEAM

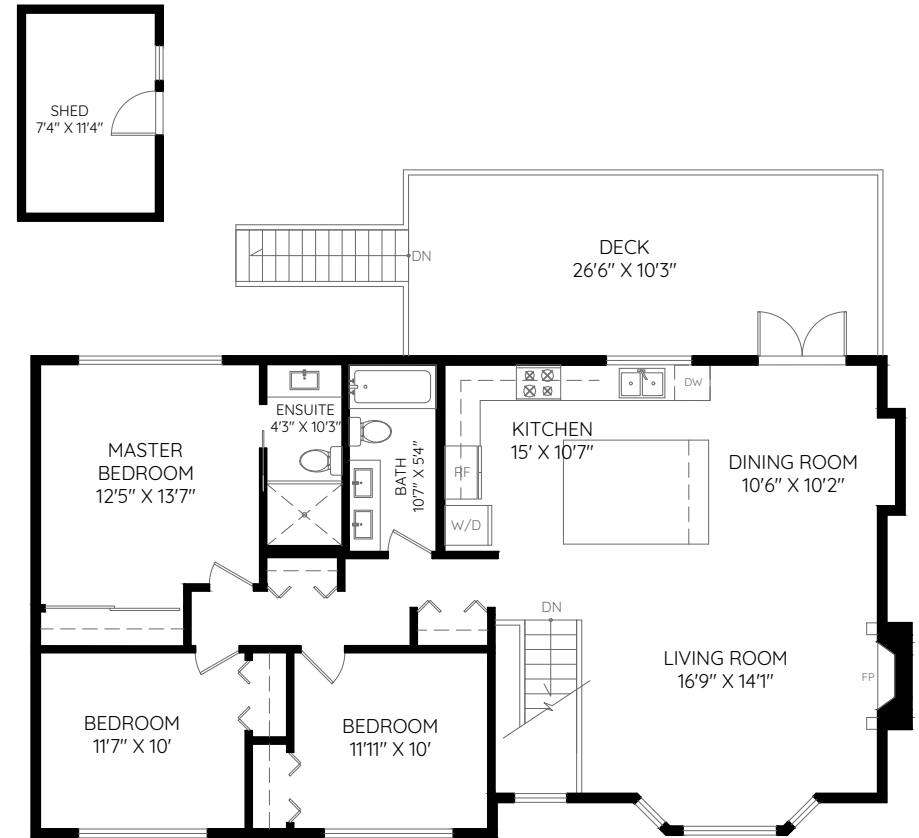
604NEWHOME.COM

MAIN	1,249 SQ.FT.
BASEMENT	891 SQ.FT.
TOTAL	2,140 SQ.FT.
GARAGE	323 SQ.FT.
SHED	100 SQ.FT.
PATIO	317 SQ.FT.
DECK	285 SQ.FT.
TOTAL	1,025 SQ.FT.

ALLAN KRUEGER
604.639.4663



BASEMENT
891 SQ.FT.
CEILING HEIGHT: 7'-11"



MAIN
1,249 SQ.FT.
CEILING HEIGHT: 8'

