



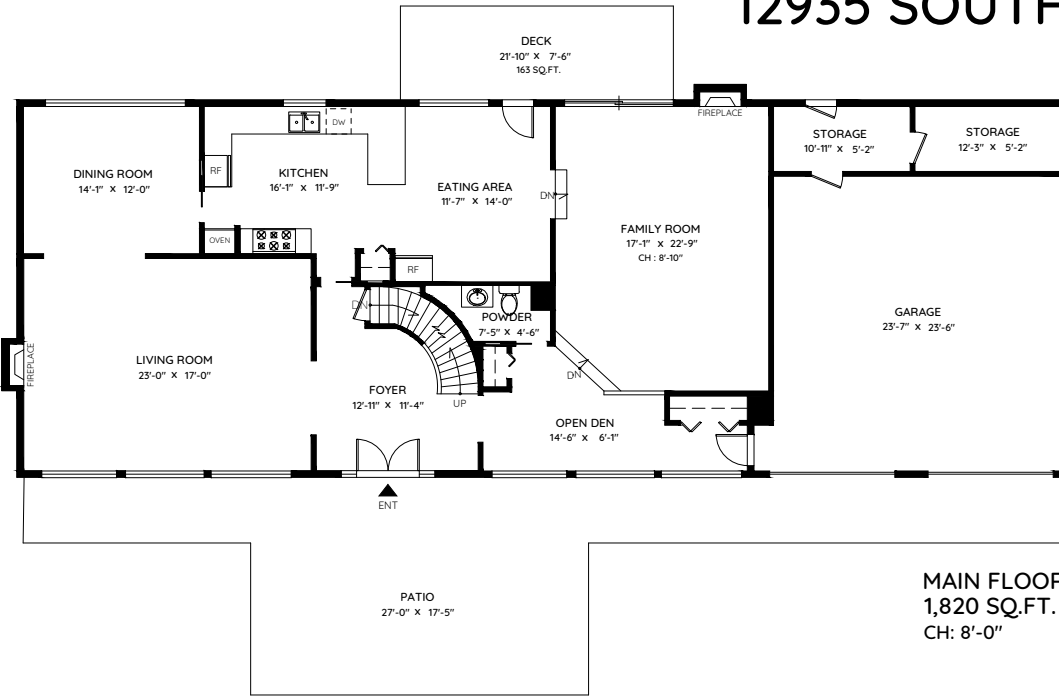
**MIKE
SIDHU**
604-831-2500



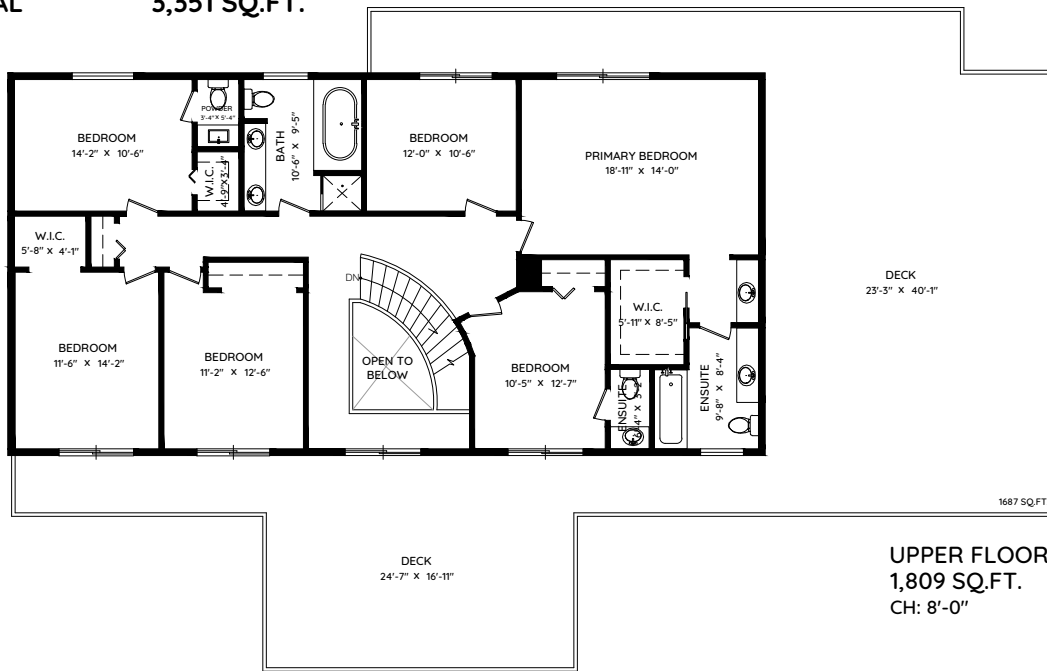
12935 SOUTHRIDGE DRIVE
SURREY, BC

MAIN 1,820 SQ.FT.
UPPER 1,809 SQ.FT.
LOWER 1,826 SQ.FT.
TOTAL 5,455 SQ.FT.

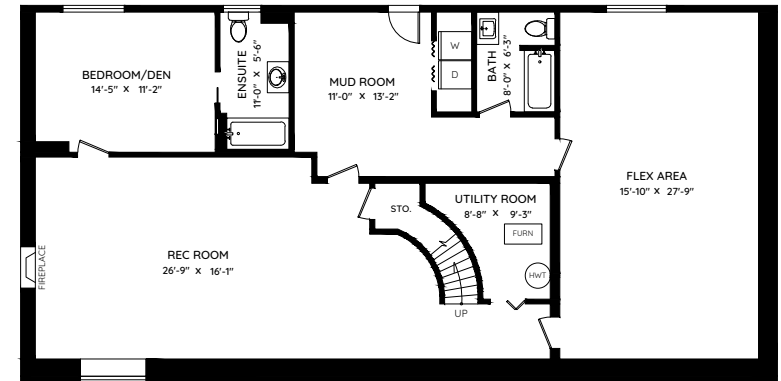
GARAGE 735 SQ.FT.
DECK 1850 SQ.FT.
PATIO 766 SQ.FT.
TOTAL 3,351 SQ.FT.



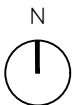
MAIN FLOOR
1,820 SQ.FT.
CH: 8'-0"



UPPER FLOOR
1,809 SQ.FT.
CH: 8'-0"



LOWER FLOOR
1,826 SQ.FT.
CH: 9'-0"



0 ft 3 ft 5 ft 10 ft

The floor plan and measurements are approximate, typically within +/- 2%. These are intended strictly for advertising purposes. They may encompass unfinished areas and are not intended for architectural or construction applications. There may be variances in the numbers if there were restrictions on property access or if taking precise measurements at the time of measuring isn't feasible. E&O insured.