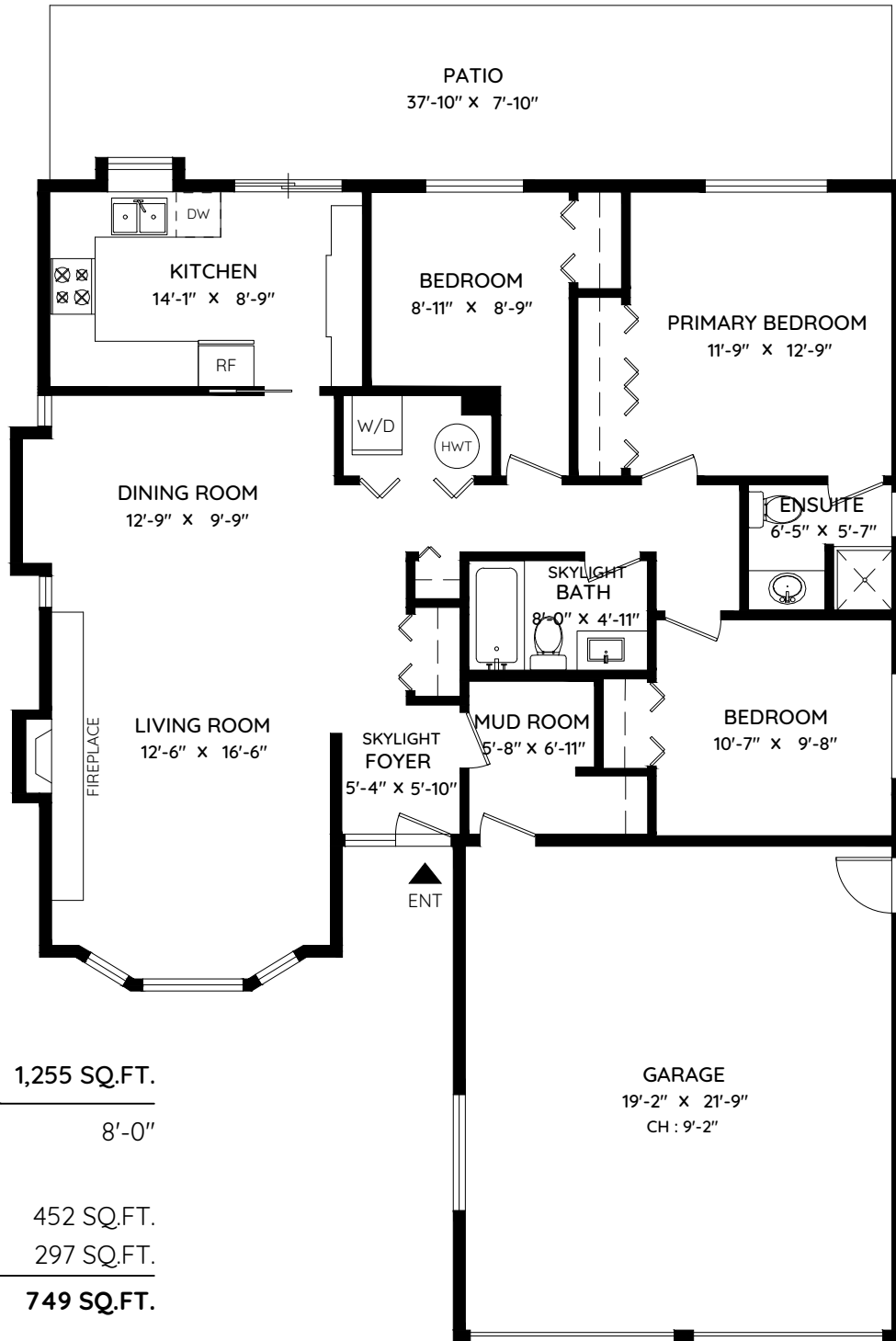


7717 JUNIPER STREET

MISSION, BC



LIVING AREA	1,255 SQ.FT.
CEILING HEIGHT	8'-0"
GARAGE	452 SQ.FT.
PATIO	297 SQ.FT.
TOTAL	749 SQ.FT.



The floor plan and measurements are approximate, typically within +/- 2%. These are intended strictly for advertising purposes. They may encompass unfinished areas and are not intended for architectural or construction applications. There may be variances in the numbers if there were restrictions on property access or if taking precise measurements at the time of measuring isn't feasible. E&O insured.