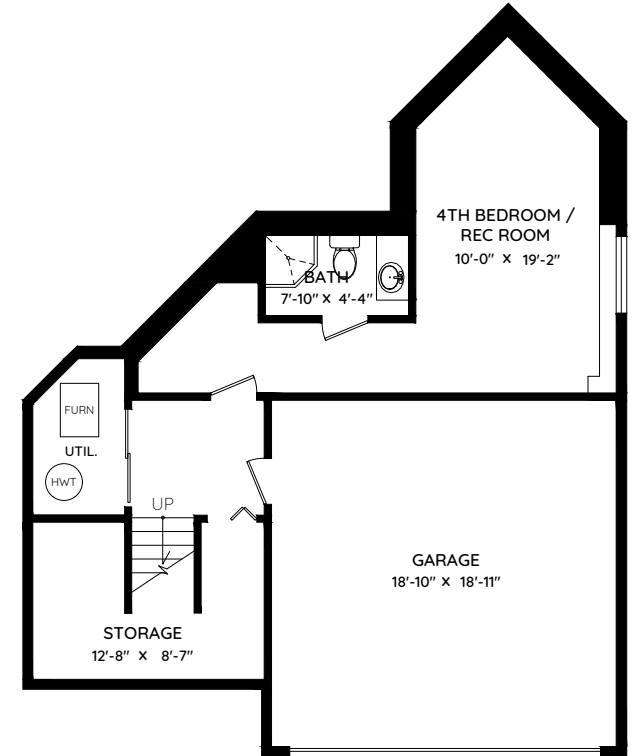
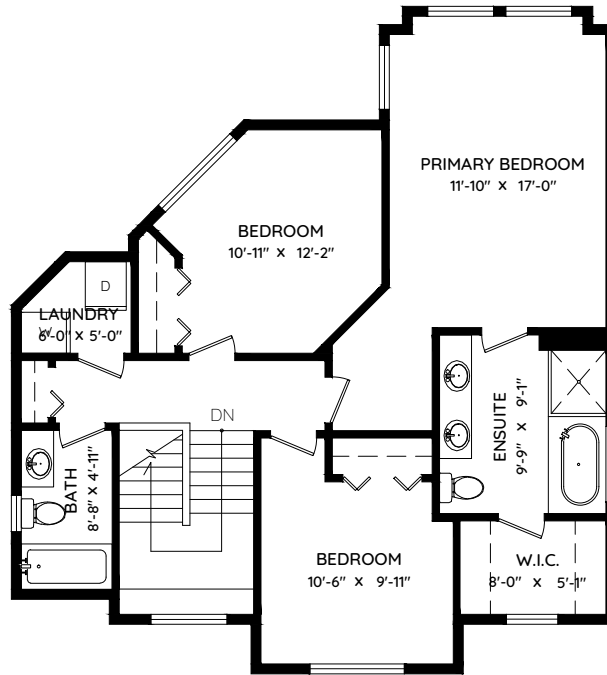
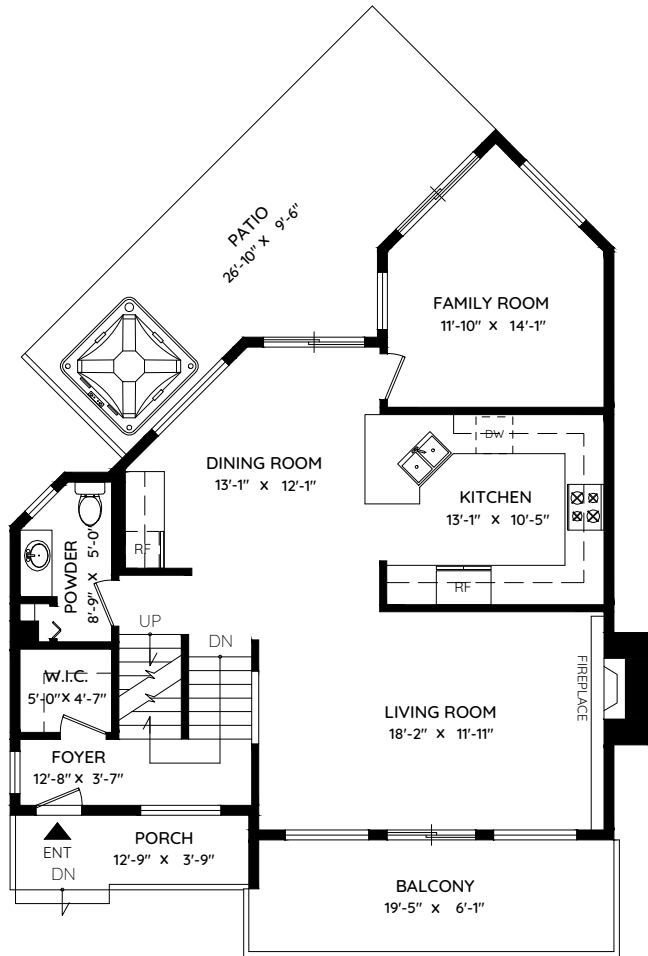


22 - 1705 PARKWAY BOULEVARD

COQUITLAM, BC

| | | | |
|--------------|---------------------|--------------|-------------------|
| MAIN | 922 SQ.FT. | GARAGE | 379 SQ.FT. |
| UPPER | 941 SQ.FT. | PORCH | 57 SQ.FT. |
| LOWER | 589 SQ.FT. | BALCONY | 130 SQ.FT. |
| TOTAL | 2,452 SQ.FT. | PATIO | 253 SQ.FT. |
| | | TOTAL | 819 SQ.FT. |



The floor plan and the measurements are approximate within +/- 2% and are to be used for advertising usage only. May include unfinished area. Not suitable for architectural or construction. E&O Insured