

1415 RUPERT STREET

VANCOUVER, BC



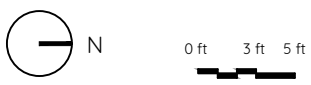
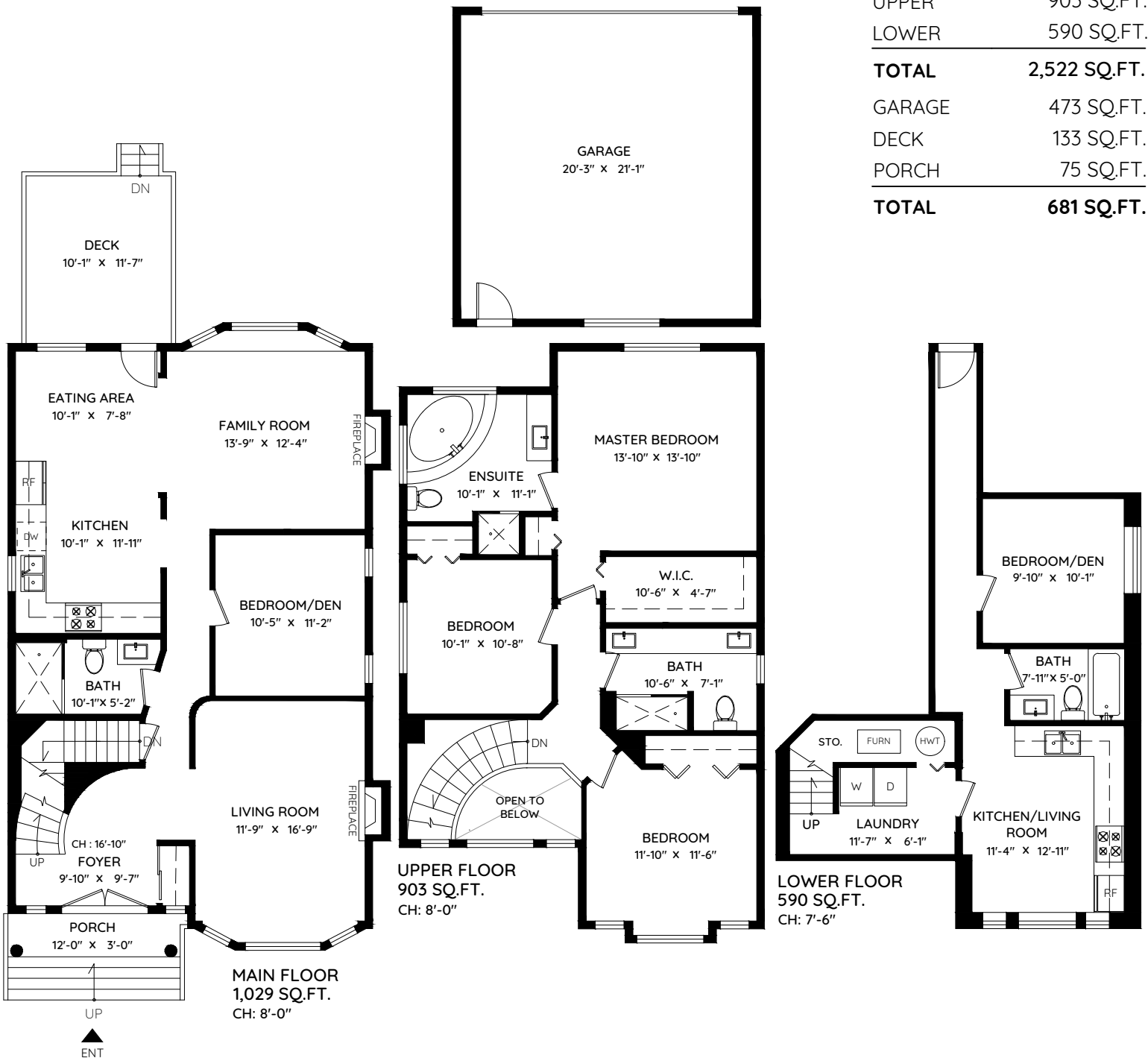
Tiffany Vu

Royal Pacific Realty Corp.

778 320 5562

tiff.vv@gmail.com

MAIN	1,029 SQ.FT.
UPPER	903 SQ.FT.
LOWER	590 SQ.FT.
TOTAL	2,522 SQ.FT.
GARAGE	473 SQ.FT.
DECK	133 SQ.FT.
PORCH	75 SQ.FT.
TOTAL	681 SQ.FT.



The floor plan and the measurements are approximate within +/- 2% and are to be used for advertising usage only. May include unfinished area. Not suitable for architectural or construction. E&O Insured

