

# 15 - 2951 PANORAMA DRIVE

COQUITLAM, BC

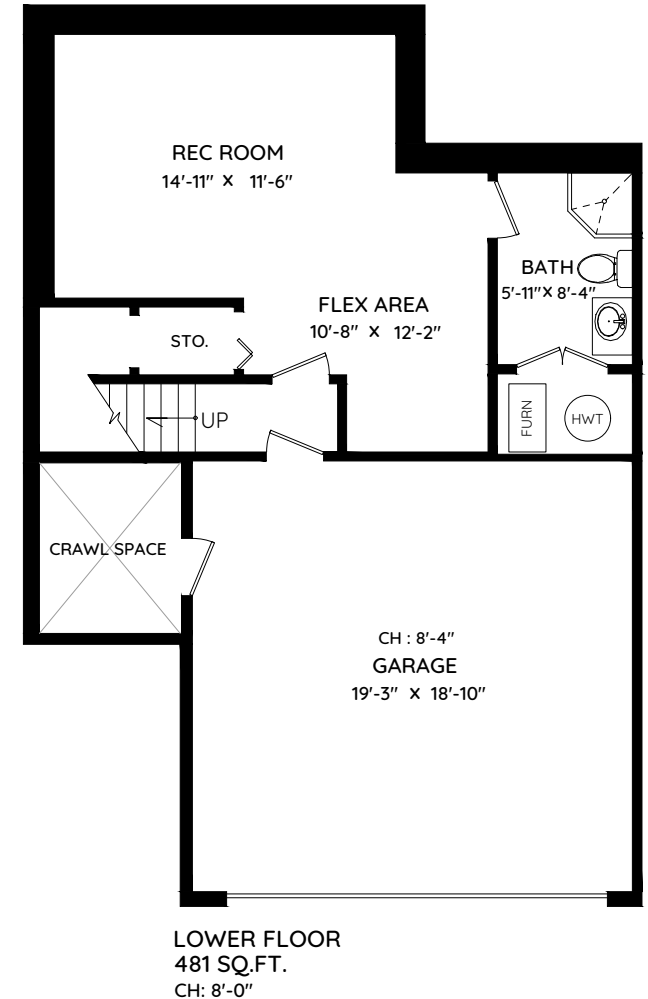
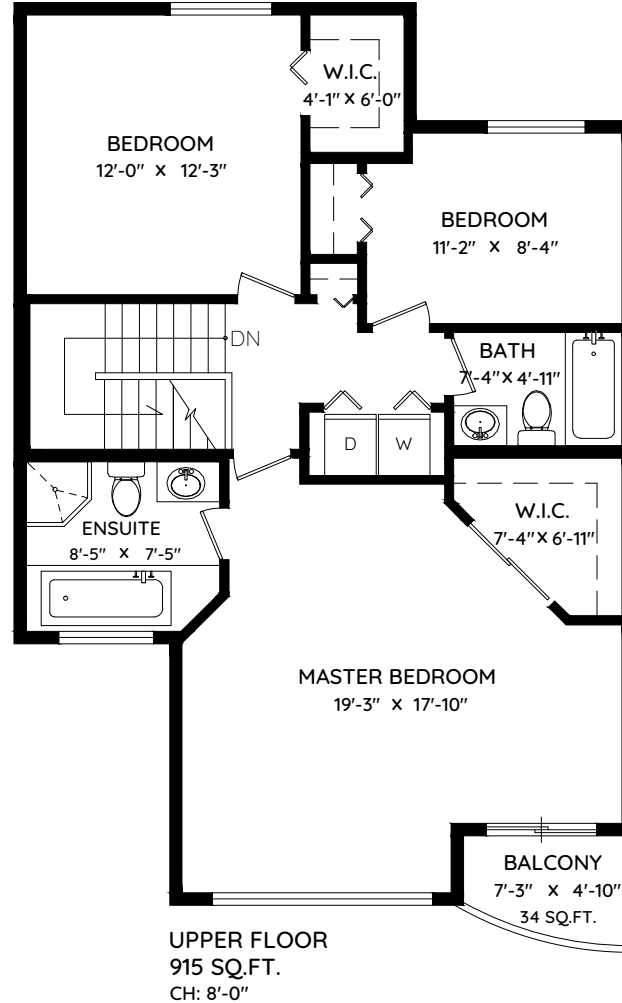
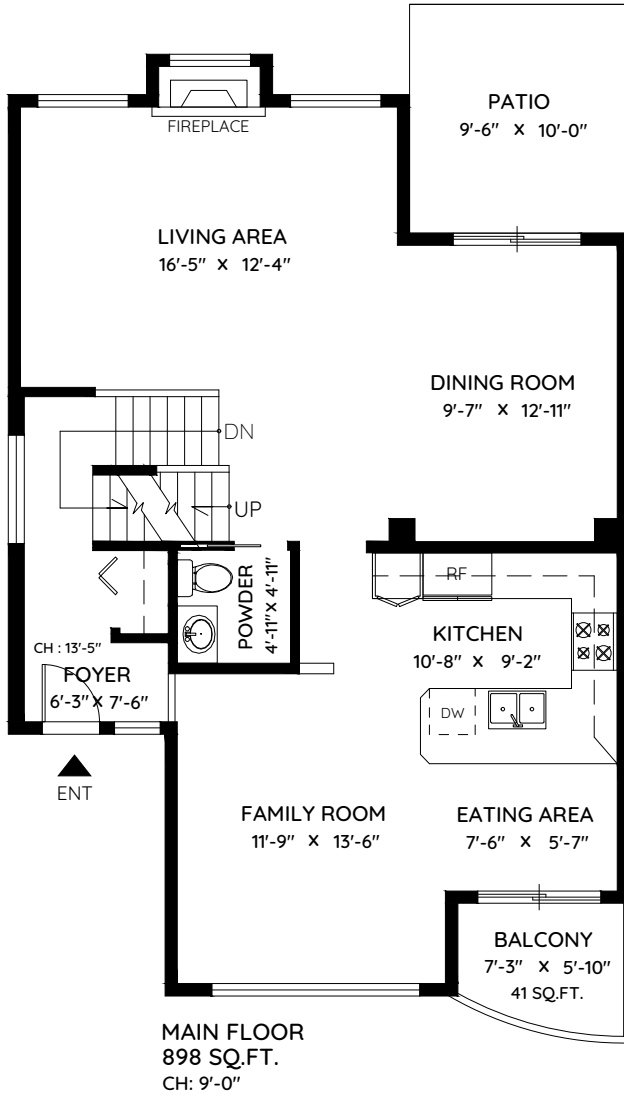


**Natasha Fonseca**

604 754 7859

natashafonseca@royallepage.ca

MAIN	898 SQ.FT.	GARAGE	392 SQ.FT.
UPPER	915 SQ.FT.	BALCONY	75 SQ.FT.
LOWER	481 SQ.FT.	PATIO	95 SQ.FT.
<b>TOTAL</b>	<b>2,294 SQ.FT.</b>	<b>TOTAL</b>	<b>562 SQ.FT.</b>



The floor plan and the measurements are approximate within +/- 2% and are to be used for advertising usage only. May include unfinished area. Not suitable for architectural or construction. E&O Insured