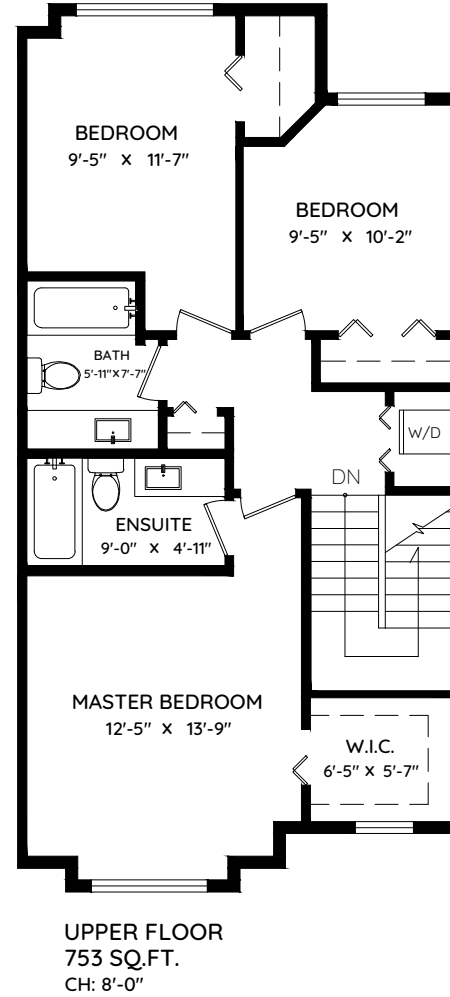
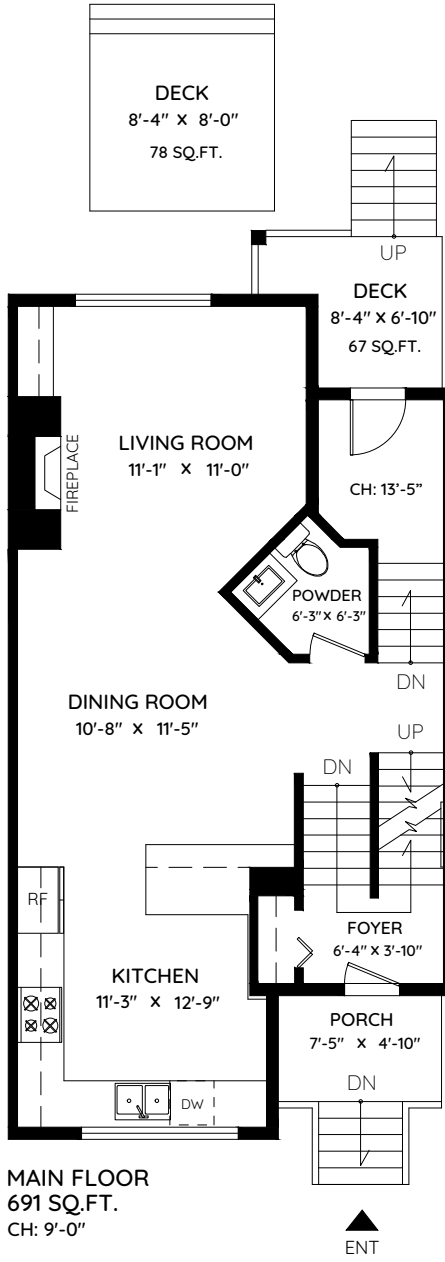
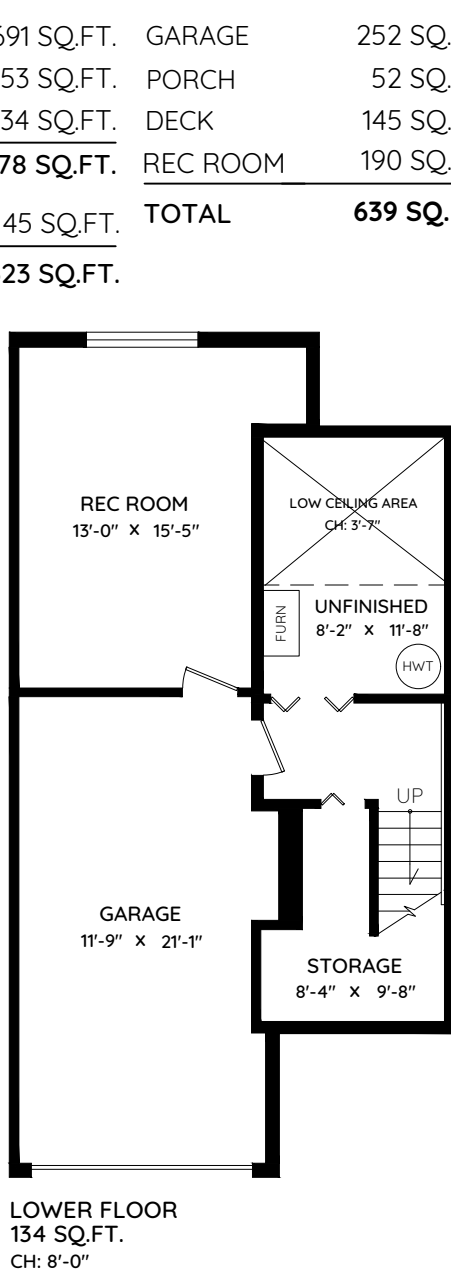


# 76 - 11252 COTTONWOOD DRIVE

MAPLE RIDGE, BC



MAIN	691 SQ.FT.	GARAGE	252 SQ.FT.
UPPER	753 SQ.FT.	PORCH	52 SQ.FT.
LOWER	134 SQ.FT.	DECK	145 SQ.FT.
<b>TOTAL</b>	<b>1,578 SQ.FT.</b>	<b>REC ROOM</b>	<b>190 SQ.FT.</b>
UNFINISHED	45 SQ.FT.	<b>TOTAL</b>	<b>639 SQ.FT.</b>
<b>TOTAL AREA</b>	<b>1,623 SQ.FT.</b>		



0 ft 3 ft 5 ft

The floor plan and the measurements are approximate within +/- 2% and are to be used for advertising usage only. May include unfinished area. Not suitable for architectural or construction. E&O Insured