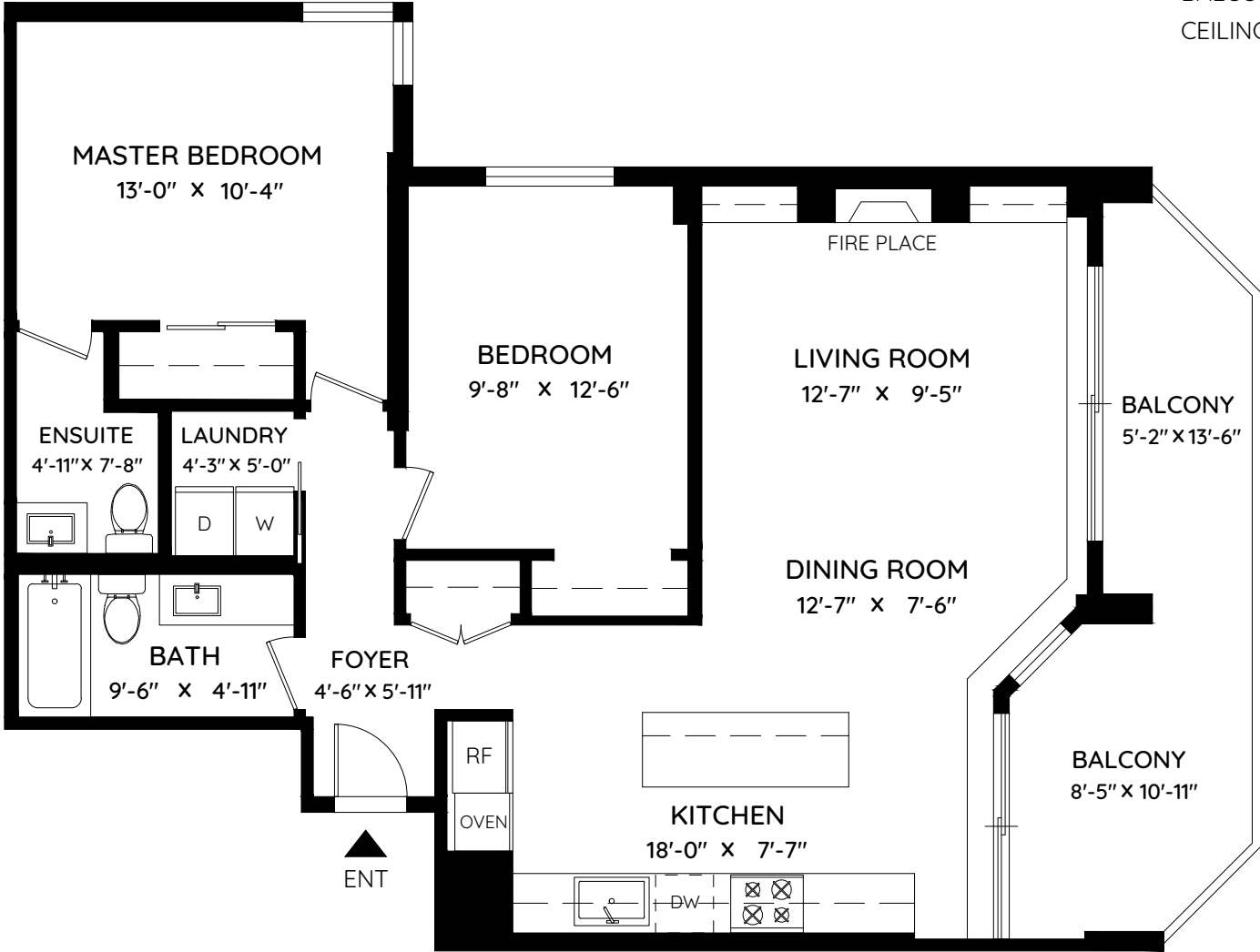


# 201 - 444 LONSDALE AVENUE

NORTH VANCOUVER, BC

LIVING AREA	965 SQ.FT.
BALCONY	160 SQ.FT.
CEILING HEIGHT	8'-0"



The floor plan and the measurements are approximate within +/- 2% and are to be used for advertising usage only. Not suitable for architectural or construction, May include unfinished area. Not suitable for architectural or construction. E&O Insured