

15971 HUMBERSIDE AVENUE

SURREY, BC

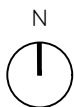
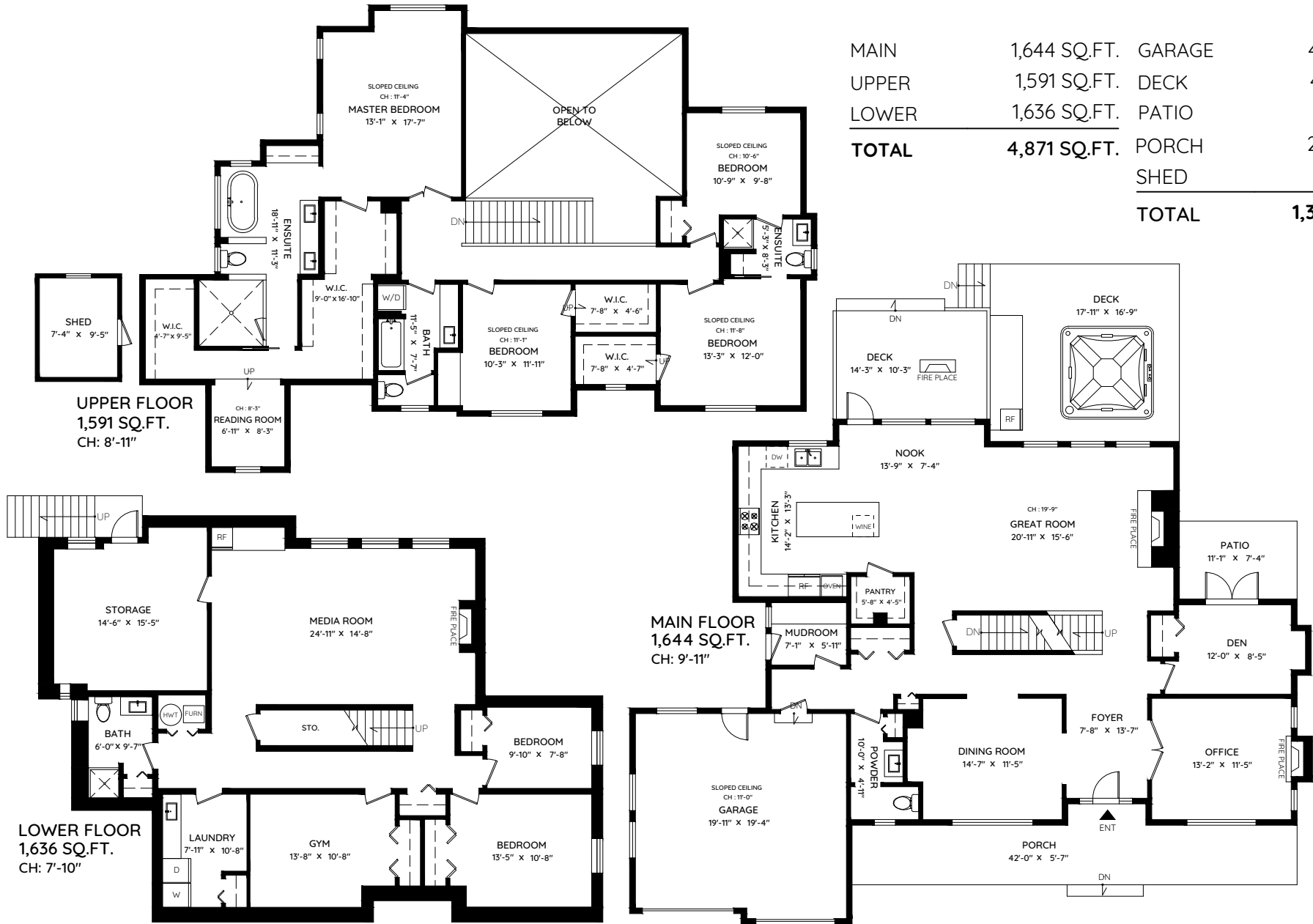


Trevor Miller

info@trevormillerhomes.com

778.847.8738

MAIN	1,644 SQ.FT.	GARAGE	408 SQ.FT.
UPPER	1,591 SQ.FT.	DECK	476 SQ.FT.
LOWER	1,636 SQ.FT.	PATIO	81 SQ.FT.
TOTAL	4,871 SQ.FT.	PORCH	258 SQ.FT.
		SHED	83 SQ.FT.
		TOTAL	1,306 SQ.FT.



0ft 3ft 5ft 10ft

The floor plan and the measurements are approximate within +/- 2% and are to be used for advertising usage only. Not suitable for architectural or construction. May include unfinished area. Not suitable for architectural or construction. E&O Insured

