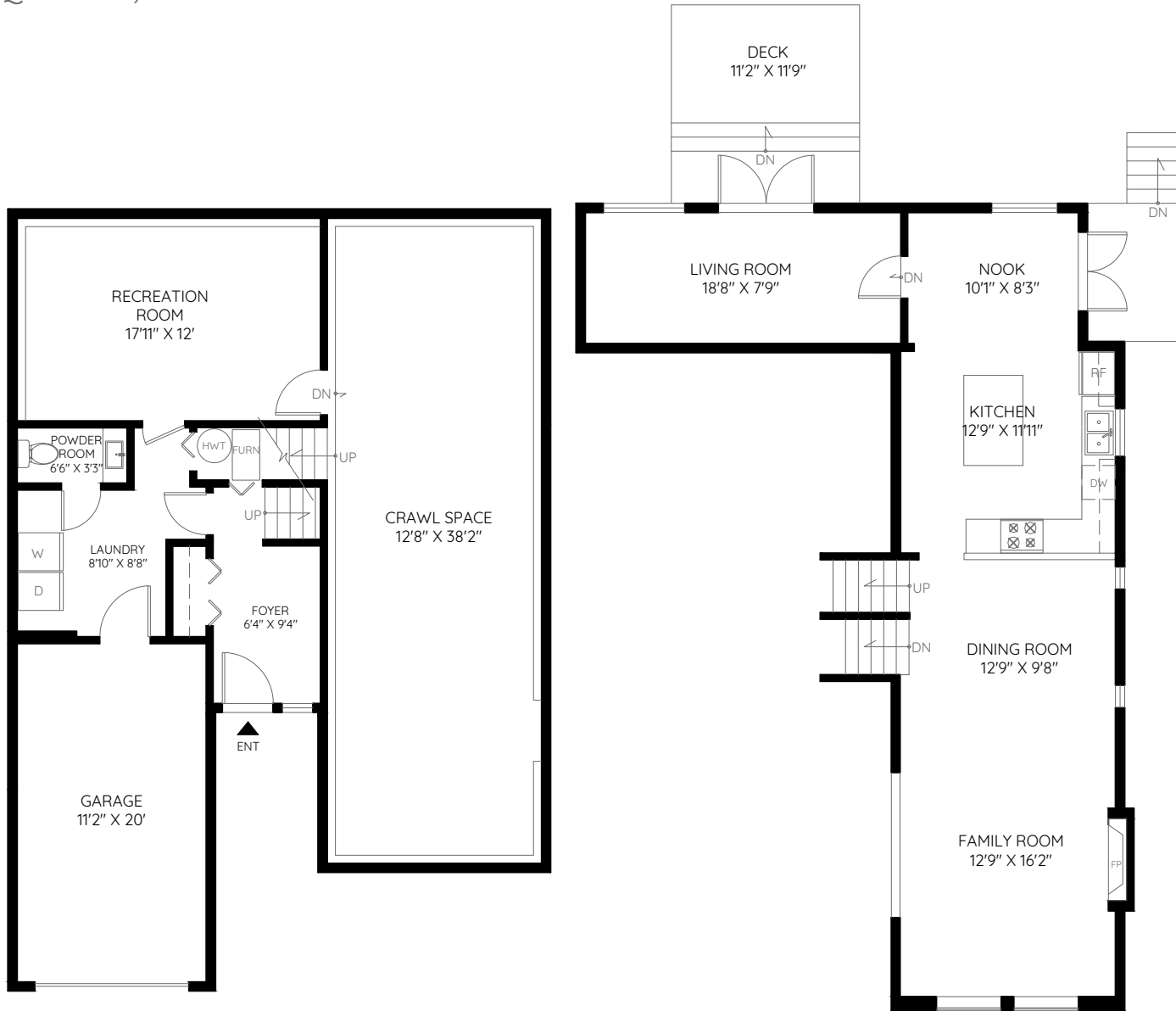


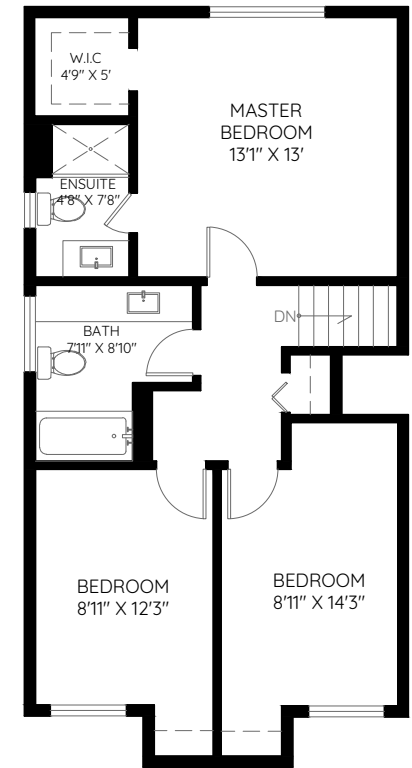
3011 DEWDNEY TRUNK ROAD

COQUITLAM, BC



LOWER
514 SQ.FT.

MAIN
822 SQ.FT.



UPPER
694 SQ.FT.

LOWER	514 SQ.FT.
MAIN	822 SQ.FT.
UPPER	694 SQ.FT.
TOTAL	2,030 SQ.FT.
GARAGE	254 SQ.FT.
CRAWL SPACE	534 SQ.FT.
DECK	130 SQ.FT.

