

6120 GLENDALOUGH PLACE

VANCOUVER, BC

LIVING AREA 4,011 SQ.FT.

CEILING HEIGHT 8'-0"

CARPORT 765 SQ.FT.

PATIO 1267 SQ.FT.

POOL 466 SQ.FT.

ENCLOSED PATIO 161 SQ.FT.

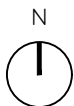
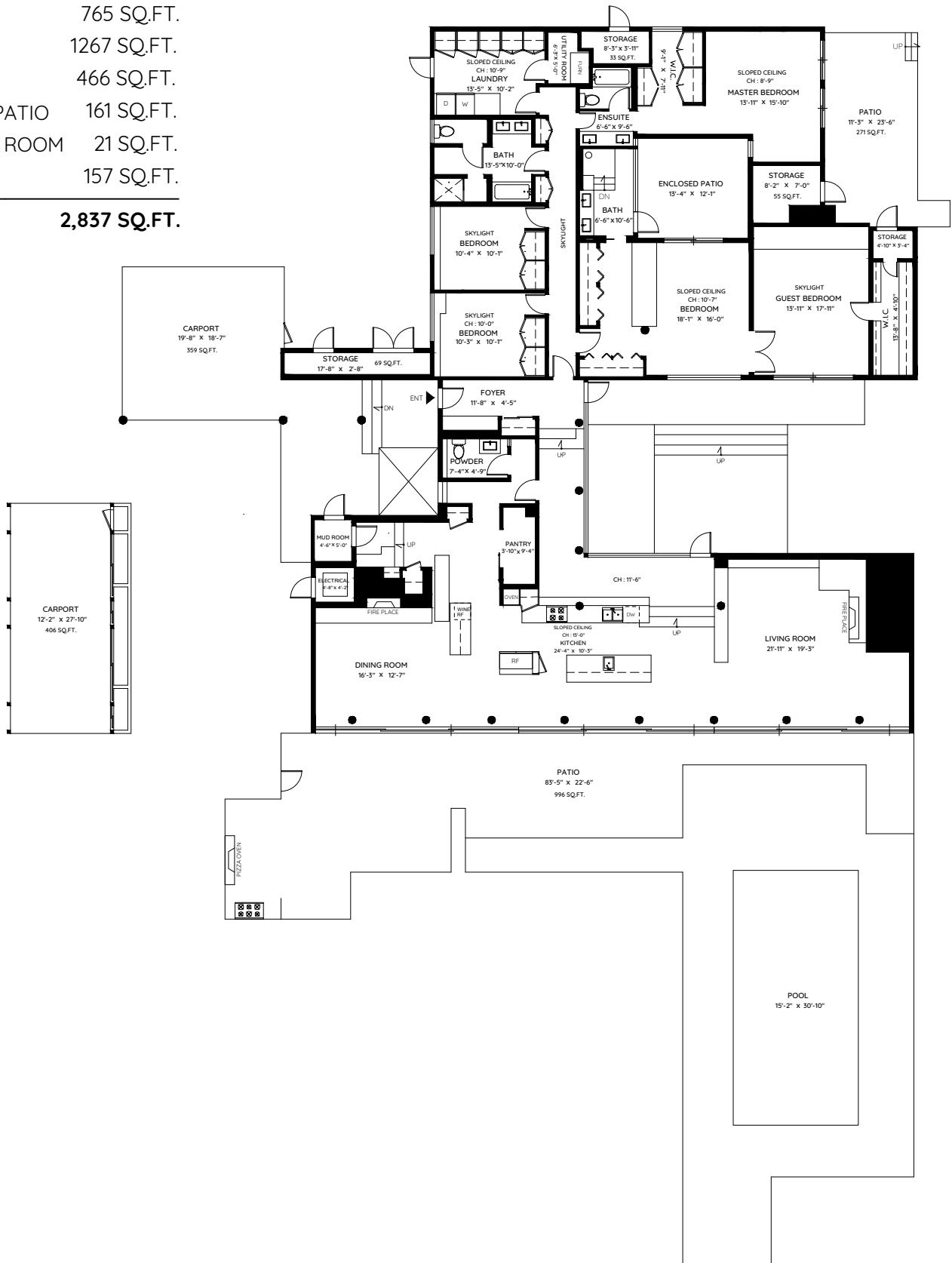
ELECTRICAL ROOM 21 SQ.FT.

STORAGE 157 SQ.FT.

TOTAL 2,837 SQ.FT.



604.787.5806 • listbuysell.ca



0 ft. 3 ft. 5 ft. 10 ft.

The floor plan and the measurements are approximate and are to be used for advertising usage only. Not suitable for architectural or construction. E&O Insured

